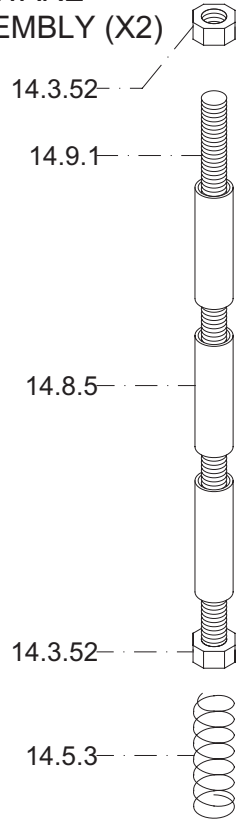
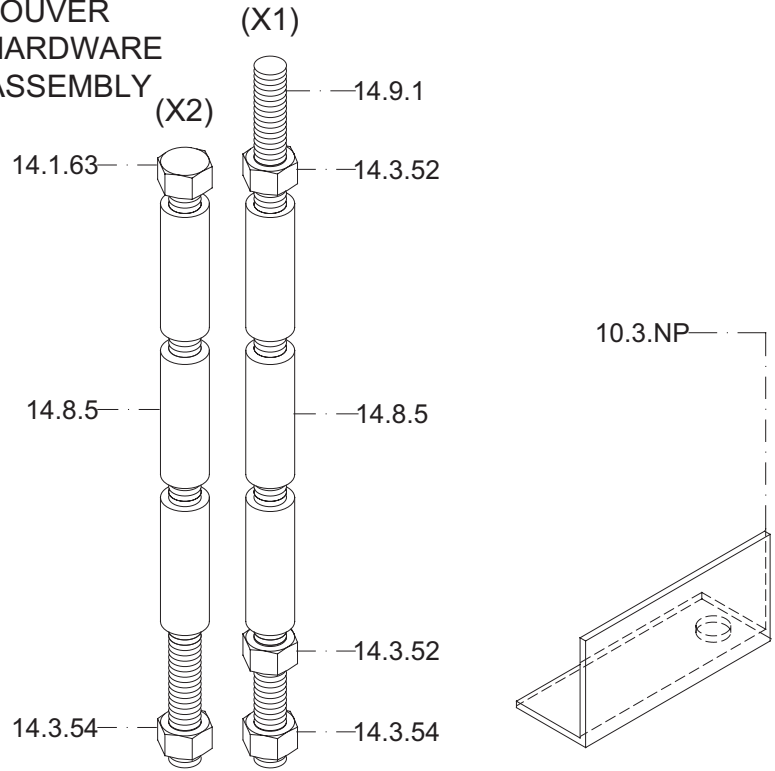


REPLACEMENT PARTS			
DESCRIPTION	NEW CODE	OLD CODE	PRICE
Ash pan plug	1.5.3.NPT		15.00
Ash pan	1.5.2.P		50.00
Floor shield assembly	1.5.6.P		N/A
Top louver fin (black)	10.1.NPR	A959	10.00
Top louver fin (gold)	10.11.NPR		30.00
Top louver fin (pewter)	10.21.NPR		30.00
Top louver hardware assembly	99.10.03.P		15.00
Nut 1/4-20 Hex	14.3.52	R1415	P/A
Louver rod	14.9.1	R6416	P/A
Spacer 1/4" X 1 3/8"	14.8.5	R6149	P/A
Retention spring for louvers	14.5.3	R6309	P/A
Bottom louver fin (black)	10.2.NP		10.00
Bottom louver fin (gold)	10.12.NP		30.00
Bottom louver fin (pewter)	10.22.NP		30.00
Bottom louver hardware assembly	99.10.04.P		45.00
Louver rod	14.9.1	R6416	P/A
Spacer 1/4" X 1 3/8"	14.8.5	R6149	P/A
Bolt 1/4" x 4 1/2" Hex	14.1.63	R1227	P/A
Nut 1/4-20 Hex	14.3.52		P/A
Nut 1/4-20 Stover	14.3.54	R1416	P/A
Lower louver magnet stop	10.3.NP		4.00
Magnet bracket assembly	1.10.3.NP		10.00
Black door set	FDDDB		400.00
Gold door set	FDDG		800.00
Pewter door set	FDDP		800.00
Radiation fire shield	9.9.P	A990	5.00
Glass retaining brackets	9.11.P	A975	4.00
Gasket replacement kit	FDGRK2		25.00
Door gasket (5/8)	14.10.3	R7005	P/A
Door gasket (1/4)	14.10.5	R7009	P/A
Door handle assembly (left)	99.09.02.P		15.00
Door handle (left)	1.9.2.P	A970A	10.00
Door handle grip (wood)	14.6.1	R6012	5.00
Washer	14.2.81	R1321P	P/A
Locknut 2-way	14.3.83	R1324	P/A
Door handle assembly (right)	99.09.01.P		20.00
Door handle (right)	1.9.3.P	A971A	10.00
Door handle spacer	14.17.30	R6426	P/A
Door closer pawl	14.17.31	A1283	5.00
Door handle grip (wood)	14.6.1	R6012	5.00
Washer	14.2.83	R1321P	P/A
Locknut 2-way	14.3.83	R1324	P/A
Hinge pin	14.17.76		10.00
Chrome cap for Opel doors	14.17.43	R6271	3.00
Black door set including glass	FDDBO		550.00
Gold door set including glass	FDDGO		950.00
Pewter door set including glass	FDDPO		950.00
includes FDDDB, FDDG, FDDP			P/A
Ceramic glass	14.7.2	A974/R6257/9-9.8.P	150.00
Glass gasket	14.10.2	R7002	10.00
Smoke baffle	11.6.P	8.1.P - A1092	50.00
Refractory complete set	99.11.01.P		200.00
Front side left refractory	11.7.P		30.00
Front side right refractory	11.8.P		30.00
Back side left refractory	11.9.P		35.00
Back side right refractory	11.10.P		35.00
Back left refractory	11.11.P		35.00
Back right refractory	11.12.P		35.00
Left bottom refractory	11.14.P		40.00
Right bottom refractory	11.15.P		40.00
Draft control gasket	7.2.DNP	A989	4.00
Draft control assembly	1.7.5.DP	A985	130.00
Primary air screen	7.9.P	A942-2	25.00
Secondary air tube	7.8.P	A1137	55.00
Draft control lever	4.1.DNP	A953W	10.00
Spring	14.5.6	R6307	2.00
Draft control knob	14.6.2	R6000	4.00
Chain and pendant assembly	99.06.01.P		10.00
Chain # 10	14.17.3	R6110	P/A
Detachable pendant	14.17.4	R6121	P/A
Terminal block assembly	99.12.01.P		25.00
Terminal block	1.12.1.DNPR	AA1088W	P/A
Terminal block cover	12.2.DNPR	AA1089	P/A
NOT AVAILABLE			N/A
PART OF ASSEMBLY			P/A

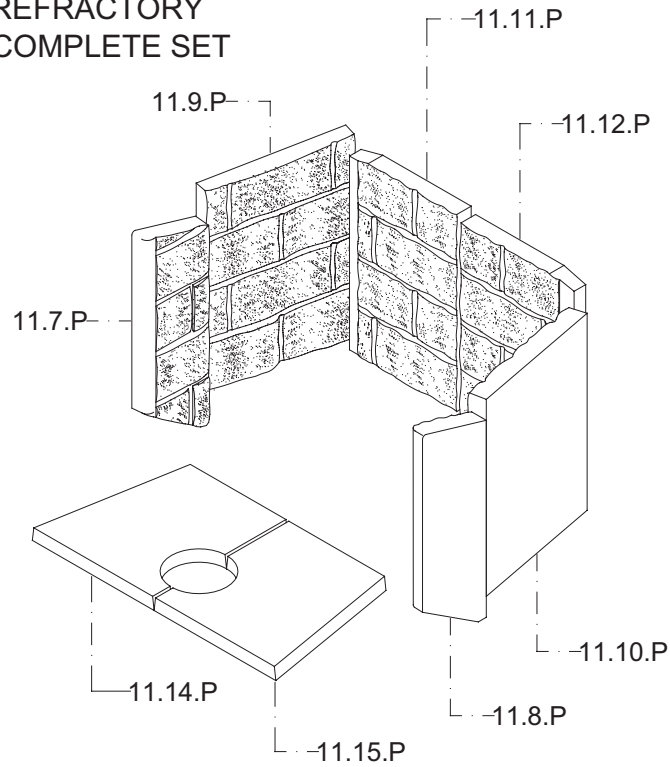
99.10.03.P
TOP LOUVER
HARWARE
ASSEMBLY (X2)



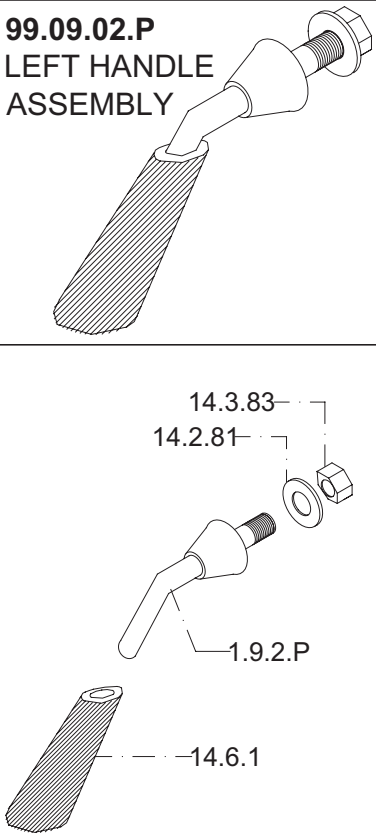
99.10.04.P
BOTTOM
LOUVER
HARWARE
ASSEMBLY



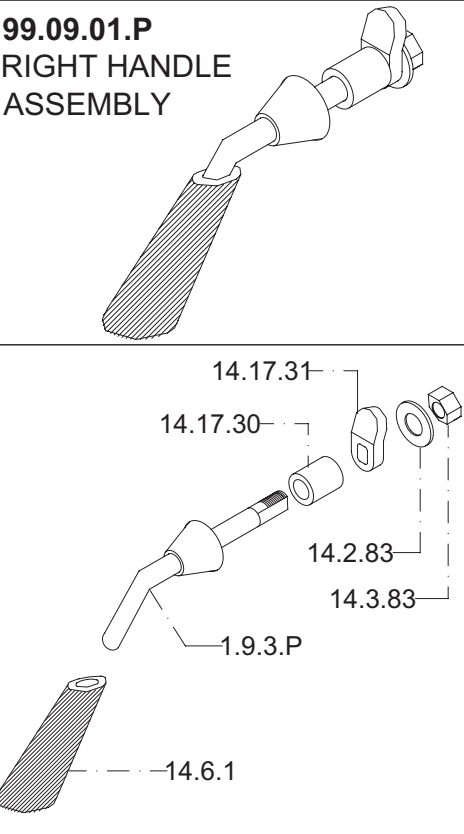
99.11.01.P
REFRACTORY
COMPLETE SET



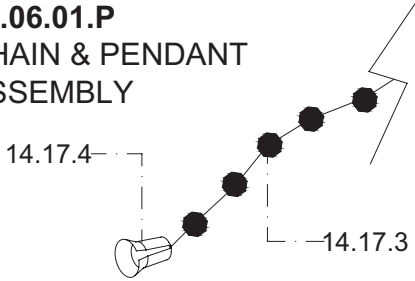
99.09.02.P
LEFT HANDLE
ASSEMBLY



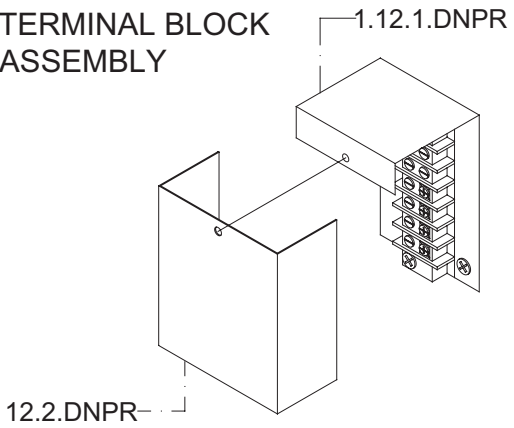
99.09.01.P
RIGHT HANDLE
ASSEMBLY



99.06.01.P
CHAIN & PENDANT
ASSEMBLY



99.12.01.P
TERMINAL BLOCK
ASSEMBLY



REPLACEMENT PARTS

DESCRIPTION	NEW CODE	OLD CODE	PRICE
Ash pan plug	1.5.3.NPT		15.00
Ash pan	1.5.2.P		50.00
Floor shield assembly	1.5.6.P		N/A
Top louver fin (black)	10.1.NPR	A959	10.00
Top louver fin (gold)	10.11.NPR		30.00
Top louver fin (pewter)	10.21.NPR		30.00
Top louver hardware assembly	99.10.03.P		15.00
Nut 1/4-20 Hex	14.3.52	R1415	P/A
Louver rod	14.9.1	R6416	P/A
Spacer 1/4" X 1 3/8"	14.8.5	R6149	P/A
Retention spring for louvers	14.5.3	R6309	P/A
Bottom louver fin (black)	10.2.NP		10.00
Bottom louver fin (gold)	10.12.NP		30.00
Bottom louver fin (pewter)	10.22.NP		30.00
Bottom louver hardware assembly	99.10.04.P		45.00
Louver rod	14.9.1	R6416	P/A
Spacer 1/4" X 1 3/8"	14.8.5	R6149	P/A
Bolt 1/4" x 4 1/2" Hex	14.1.63	R1227	P/A
Nut 1/4-20 Hex	14.3.52		P/A
Nut 1/4-20 Stover	14.3.54	R1416	P/A
Lower louver magnet stop	10.3.NP		4.00
Magnet bracket assembly	1.10.3.NP		10.00
Black door set	FDDDB		400.00
Gold door set	FDDG		800.00
Pewter door set	FDDP		800.00
Radiation fire shield	9.9.P	A990	5.00
Glass retaining brackets	9.11.P	A975	4.00
Gasket replacement kit	FDGRK2		25.00
Door gasket (5/8)	14.10.3	R7005	P/A
Door gasket (1/4)	14.10.5	R7009	P/A
Door handle assembly (left)	99.09.02.P		15.00
Door handle (left)	1.9.2.P	A970A	10.00
Door handle grip (wood)	14.6.1	R6012	5.00
Washer	14.2.81	R1321P	P/A
Locknut 2-way	14.3.83	R1324	P/A
Door handle assembly (right)	99.09.01.P		20.00
Door handle (right)	1.9.3.P	A971A	10.00
Door handle spacer	14.17.30	R6426	P/A
Door closer pawl	14.17.31	A1283	5.00
Door handle grip (wood)	14.6.1	R6012	5.00
Washer	14.2.83	R1321P	P/A
Locknut 2-way	14.3.83	R1324	P/A
Hinge pin	14.17.76		10.00
Chrome cap for Opel doors	14.17.43	R6271	3.00
Black door set including glass	FDDBO		550.00
Gold door set including glass	FDDGO		950.00
Pewter door set including glass	FDDPO		950.00
includes FDDDB, FDDG, FDDP			P/A
Ceramic glass	14.7.2	A974/R6257/9-9.8.P	150.00
Glass gasket	14.10.2	R7002	10.00
Smoke baffle	11.6.P	8.1.P - A1092	50.00
Refractory complete set	99.11.01.P		200.00
Front side left refractory	11.7.P		30.00
Front side right refractory	11.8.P		30.00
Back side left refractory	11.9.P		35.00
Back side right refractory	11.10.P		35.00
Back left refractory	11.11.P		35.00
Back right refractory	11.12.P		35.00
Left bottom refractory	11.14.P		40.00
Right bottom refractory	11.15.P		40.00
Draft control gasket	7.2.DNP	A989	4.00
Draft control assembly	1.7.5.DP	A985	130.00
Primary air screen	7.9.P	A942-2	25.00
Secondary air tube	7.8.P	A1137	55.00
Draft control lever	4.1.DNP	A953W	10.00
Spring	14.5.6	R6307	2.00
Draft control knob	14.6.2	R6000	4.00
Chain and pendant assembly	99.06.01.P		10.00
Chain # 10	14.17.3	R6110	P/A
Detachable pendant	14.17.4	R6121	P/A
Terminal block assembly	99.12.01.P		25.00
Terminal block	1.12.1.DNPR	AA1088W	P/A
Terminal block cover	12.2.DNPR	AA1089	P/A

NOT AVAILABLE
PART OF ASSEMBLY

N/A
P/A



ASSEMBLIES

OPEL AP